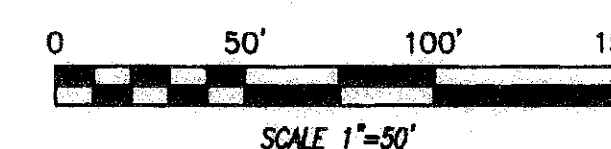
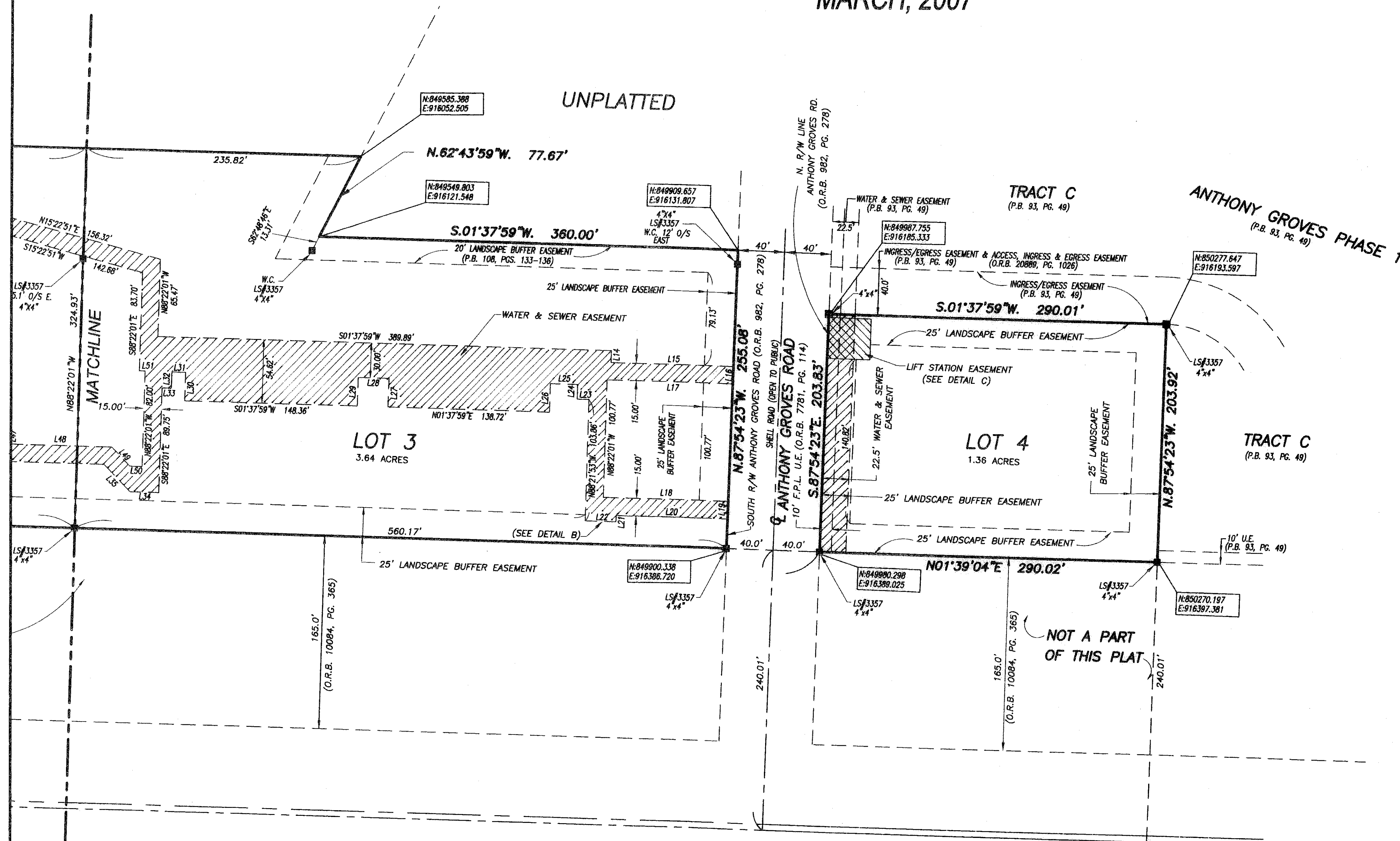


REPLAT OF ANTHONY GROVES PLAZA, REPLAT

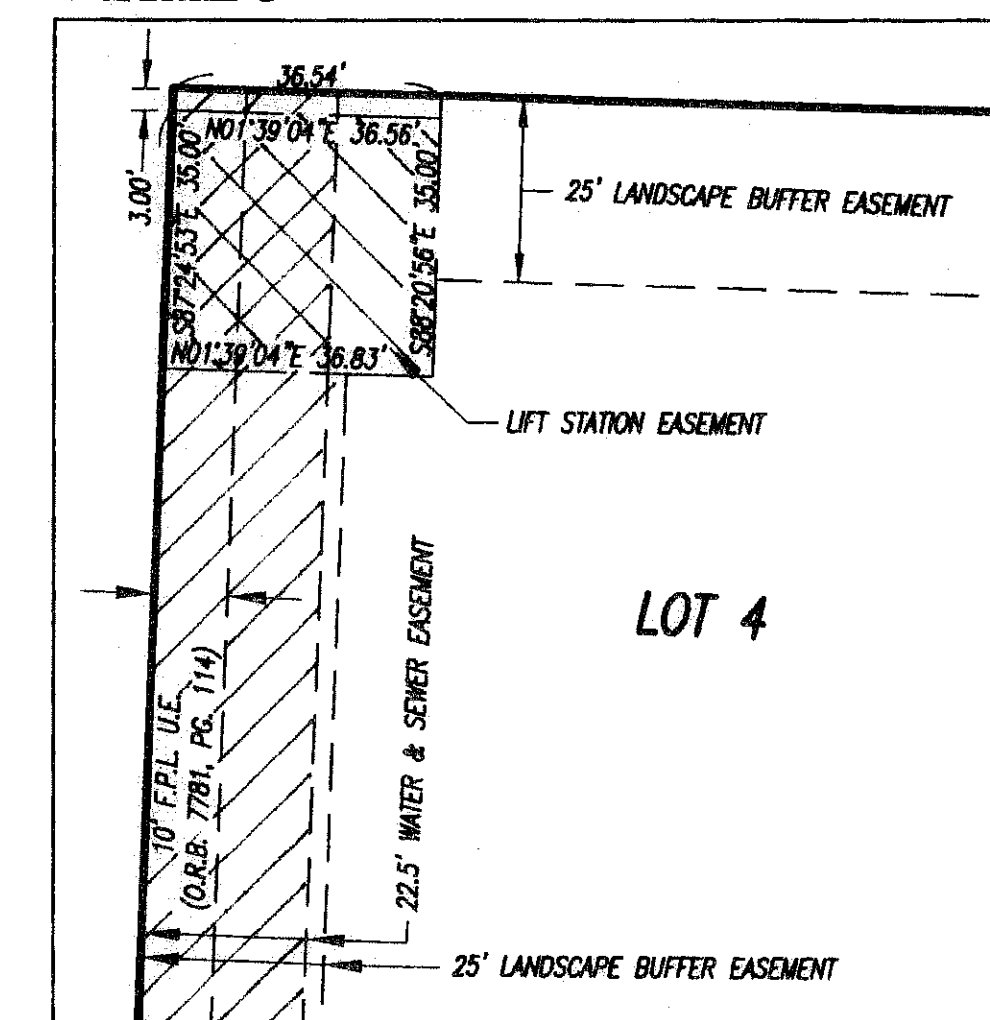
69

BEING A REPLAT OF LOTS 1 THROUGH 4, ANTHONY GROVES PLAZA, RECORDED IN PLAT BOOK 108,
 PAGES 133 THROUGH 136, VILLAGE OF ROYAL PALM BEACH, PALM BEACH COUNTY, FLORIDA
 MARCH, 2007

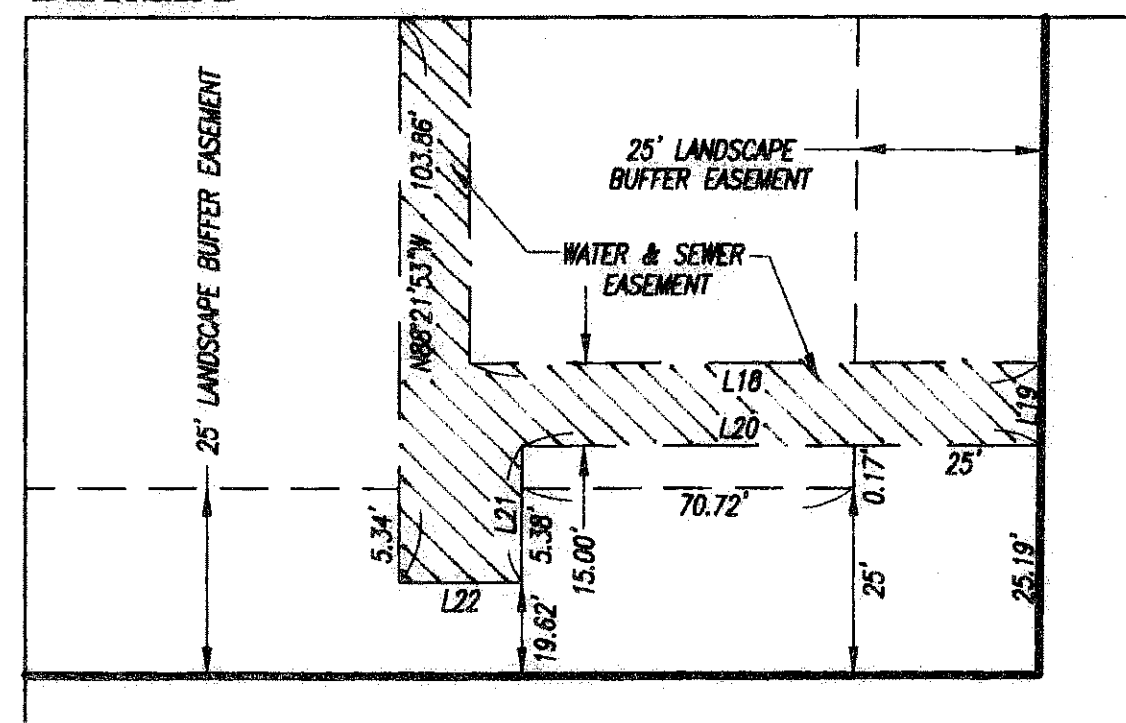
SHEET 5 OF 5



DETAIL C (NOT TO SCALE)



DETAIL B (NOT TO SCALE)



REPLAT OF ANTHONY GROVES PLAZA,
 REPLAT



FIELD:	JOB NO.:	DATE:	DWG. NO.:
OFFICE:	REP.:	DATE:	DWG. NO.:
CVD:	REP.:	DATE:	DWG. NO.: